

2021

Business School Data Guide

(October 2021 Release)

POWERED BY DATADIRECT

aacsb.edu





Translating theory into practice.

It's a skill we believe every Gies student should have, so we deliver the hands-on opportunities that make what they learn real.

It started 25 years ago with the launch of Illinois Business Consulting, now one of the largest student-run consulting organizations in the world.

And it continues today, with more opportunities to work on real projects for real clients.

Gies students collaborate with interdisciplinary teams in our Disruption Lab, analyzing emerging technologies like blockchain and AI, and assessing their impact on work and on society.

Through our partnership with the Siebel Center for Design, our students learn how to leverage design thinking and UI/UX approaches to solve real problems.

And now each Gies junior will take Business in Action, the largest experiential learning course in the nation.

Real client projects for real impact. That's Business on Purpose.



**Gies College
of Business**

BUSINESS SCHOOL DATA GUIDE FALL 2021



Americas

777 South Harbour Island Boulevard, Suite 750
Tampa, Florida 33602-5730 USA
+1 813 769 6500

Europe, Middle East, and Africa

UP Building
Piet Heinkade 55
1019 GM Amsterdam, The Netherlands
+31 20 509 1070

Asia Pacific

331 North Bridge Road
#10-04/05 Odeon Towers
Singapore, 188720
+65 6592 5210

aacsb.edu

© 2021 AACSB International

CONTENTS

1 » Foreword	5
<hr/>	
2 » Business Unit	7
AACSB Network	10
Autonomy	13
Stakeholders	17
<hr/>	
3 » Finances	19
Operations	21
Uses of Funds	22
Sources of Funds	23
<hr/>	
4 » Faculty, Staff, and Administrators	28
Headcounts	31
Demographics	37
Salary	39
<hr/>	
5 » Students	52
Programs	55
Demographics	60
Employment	68
<hr/>	
7 » About AACSB	76
AACSB Resources	78
<hr/>	

FOREWORD

These data reflect the first academic year in which business schools worldwide were impacted by the COVID-19 global health crisis.

We saw substantial shifts to online delivery, to hybrid and multi-modal formats, and to changes in business school operations. This guide provides an overview of many business school functions and how they were affected by the pandemic in the last academic session of 2020.

For a more detailed overview of how business programs were impacted by COVID-19, and the trajectory they have taken over the last five years, we encourage you to view the [2020-21 Business Program Trends Report](#).

As always, please exercise care when applying the aggregate, industry-level data shown in this guide. Such high-level data may be inappropriate for benchmarking and decision-making purposes. For example, industry-level average salaries may be interesting, but using the data to negotiate contracts or to plan is not recommended. Instead, consider generating more contextually relevant custom data reports through DataDirect.

We are deeply grateful for our AACSB member schools who contributed to AACSB surveys during the pandemic, enabling the creation of this data guide.

Visit aacsbedu.com/data to get more data on business education and learn how you can make your own custom reports.

Trusted Facts for Future Business Leaders

With The Wall Street Journal's university membership program, you can ensure that students receive quality, trusted news that is accessible anywhere, anytime. Our program meets the needs of students, with unlimited access to WSJ.com through desktop, tablet and mobile devices as well as:



Curated Newsletters

Daily and weekly email newsletters providing highlights, summaries and updates on the stories that matter—delivered straight to inboxes.



WSJ Podcasts

Essential news and analysis featuring engaging interviews and discussions that can be listened to anytime.



WSJ Videos

Tech, markets, arts and lifestyle coverage come to life along with daily news updates, opinions and analysis from top Journal editors.



WSJ+

A complimentary member benefit that provides access to exclusive offers, experiences and events, including talks with newsmakers and top WSJ journalists.



Noted

The WSJ Noted Advisers Network is a space for students and recent graduates to network and navigate all things employment. With over 50K members, the network provides an opportunity to meet other young professionals, network with some of the journalists from WSJ and discover new tools and content from The Wall Street Journal.



Professor Tools

Professors can easily integrate the in-depth reporting of The Wall Street Journal into their classroom with our suite of exclusive tools—WSJ Context, The Assessment Tool, Weekly Review, Critical Think Resources and Seminar Series.

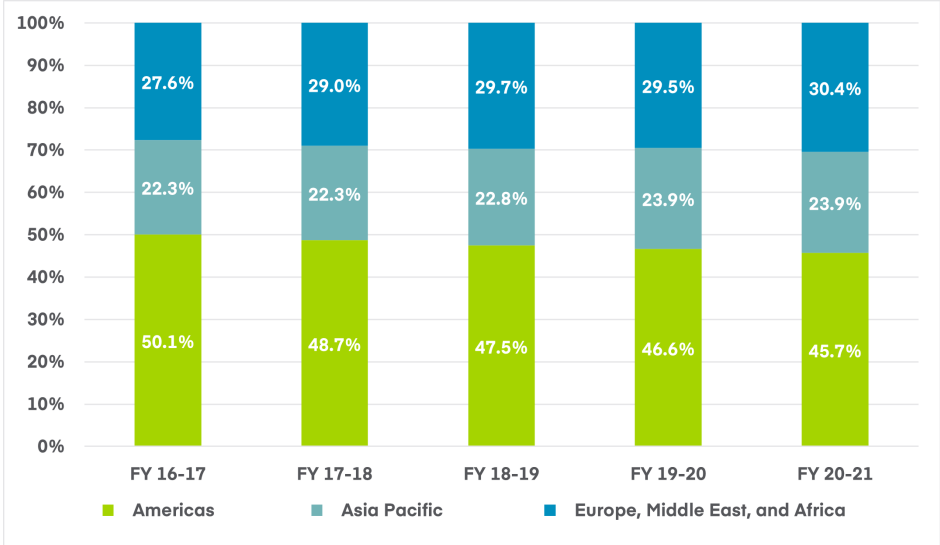
LEARN MORE

[WSJ.com/UniversityMembership](https://www.wsj.com/UniversityMembership)

BUSINESS UNIT

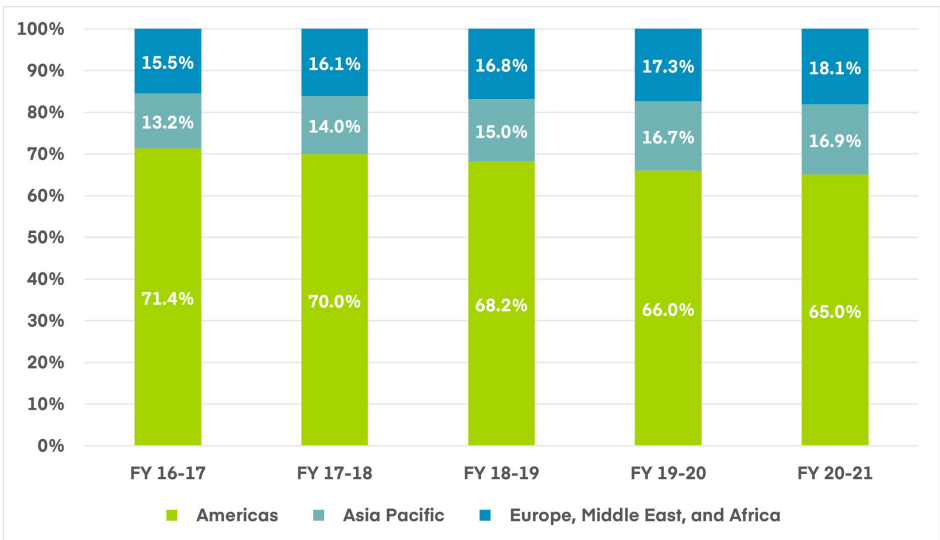
Between June 30, 2017, and June 30, 2018, the Americas no longer represented more than 50 percent of AACSB's total membership. Since then, representation by schools in Asia Pacific and Europe, Middle East, and Africa (EMEA) has steadily grown.

PROPORTION OF EDUCATION MEMBERS BY MACRO REGION



Schools in Asia Pacific and EMEA now make up 35 percent of AACSB's accredited schools.

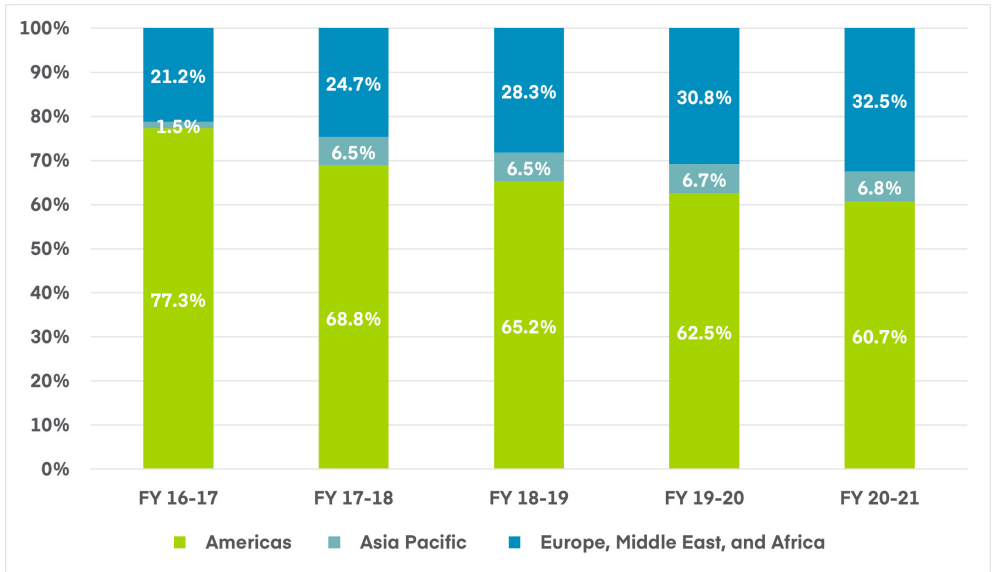
PROPORTION OF ACCREDITED MEMBERS BY MACRO REGION



BUSINESS UNIT

AACSB's and EMEA business membership representation has increased by 17 percent over the last five years.

PROPORTION OF BUSINESS MEMBERS BY MACRO REGION



BUSINESS UNIT

AACSB Network

AACSB MEMBERS BY COUNTRY/TERRITORY (SEPTEMBER 2021)

Country/Territory	Count of Educational Members	Count of AACSB-Accredited Members	Country/Territory	Count of Educational Members	Count of AACSB-Accredited Members
Afghanistan	2	0	Fiji	1	0
Albania	1	0	Finland	11	5
Algeria	1	0	France	56	26
Argentina	3	1	Georgia	2	0
Australia	36	20	Germany	34	11
Austria	9	2	Ghana	2	0
Azerbaijan	2	0	Greece	2	0
Bahrain	7	1	Guatemala	1	0
Bangladesh	5	0	Hong Kong (China)	9	7
Belgium	8	4	Hungary	3	0
Bhutan	1	0	Iceland	1	0
Bolivia	2	0	India	71	15
Bosnia and Herzegovina	1	1	Indonesia	23	2
Brazil	13	4	Ireland	9	5
Brunei Darussalam	2	0	Israel	4	2
Cambodia	1	0	Italy	6	2
Cameroon	1	0	Jamaica	2	0
Canada	49	25	Japan	12	7
Chile	13	3	Jordan	11	1
China (Mainland)	95	33	Kazakhstan	4	0
Colombia	11	4	Kenya	2	0
Costa Rica	1	1	Kuwait	5	4
Côte d'Ivoire	3	0	Kyrgyzstan	1	0
Croatia	3	2	Latvia	4	0
Curaçao (Kingdom of the Netherlands)	1	0	Lebanon	9	2
Cyprus	4	0	Liberia	1	0
Czech Republic	1	0	Liechtenstein	1	0
Denmark	4	2	Lithuania	3	0
Dominican Republic	2	0	Luxembourg	1	0
Ecuador	4	1	Macau (China)	2	1
Egypt	5	1	Malaysia	23	7
Estonia	1	0	Mexico	12	6

BUSINESS UNIT

AACSB Network

AACSB MEMBERS BY COUNTRY/TERRITORY (SEPTEMBER 2021)

Country/Territory	Count of Educational Members	Count of AACSB-Accredited Members	Country/Territory	Count of Educational Members	Count of AACSB-Accredited Members
Monaco	1	1	Singapore	5	4
Morocco	9	2	Slovakia	1	0
Netherlands	13	6	Slovenia	3	2
New Zealand	8	7	South Africa	7	3
Nigeria	2	1	South Korea	18	18
Northern Cyprus	1	0	Spain	24	6
Norway	6	2	Sri Lanka	6	0
Oman	3	0	Sweden	8	5
Pakistan	8	1	Switzerland	23	6
Palestine	1	0	Taiwan	40	27
Panama	1	0	Thailand	17	7
Paraguay	1	0	Tunisia	4	0
Peru	7	3	Turkey	15	4
Philippines	6	1	Ukraine	2	0
Poland	12	2	United Arab Emirates	25	7
Portugal	6	5	United Kingdom	87	37
Puerto Rico (U.S.)	4	2	United States (50 states)	628	535
Qatar	1	1	Uruguay	3	0
Romania	4	0	Venezuela	1	1
Russia	10	1	Vietnam	4	0
Saudi Arabia	19	5	Zambia	1	0
Senegal	5	0	TOTAL	1,670	910

BUSINESS UNIT

AACSB Network

AACSB MEMBERS BY GEOGRAPHIC REGION AND MEMBERSHIP TYPE (SEPTEMBER 2021)

Location	Count of AACSB-Accredited Members	Count of Educational Members	Count of Business Members	Count of All Members
Canada	25	49	7	56
United States (Excl. Territories in Oceania/ Carribbean)	535	628	67	695
Latin America and Caribbean	26	82	1	83
Central, Southern, South Eastern, and Eastern Asia	130	355	11	366
Oceania	27	45	0	45
Africa	7	43	0	43
Middle East	23	85	2	87
Europe and Near East	137	383	39	422
Global	910	1,670	127	1,797

Note: Accredited members must also be educational members. Figures are current as of September 30, 2021.

BUSINESS UNIT

Business School Autonomy Level

RELATIONSHIP WITH PARENT INSTITUTION

Business schools maintain various levels of autonomy with their parent institution or university. Some are entirely independent of any other academic institution. This table details those relationships and their prevalence by world region.

Business School Relationship With Parent University	Asia Pacific	Europe, Middle East, Africa	Americas	Global
Standard Academic Unit of Parent Institution (Type A) The business school is one academic unit among several others, all of which are part of a larger parent university (or other academic institution) from which it derives its degree-granting authority.	76.9%	63.2%	94.3%	85.5%
Semi-/Mostly Autonomous Unit of Parent Institution (Type B) The business school is a semi- or mostly autonomous academic unit but still derives degree-granting authority from a larger parent university (or other academic institution).	13.5%	16.1%	4.4%	8.0%
Independent Institution (Type C) The business school is an independent academic institution with its own degree-granting authority, not attached to or dependent on any other academic institution.	9.6%	20.7%	1.3%	6.5%

Source: AACSB BSQ Programs Module and BSQ Finances Module (2020–21)

BUSINESS UNIT

System for Managing Permanent Faculty

System	Asia Pacific	Europe, Middle East, Africa	Americas	Global
AAUP System	50.8%	24.6%	94.0%	20.1%
Probation on the Job	13.7%	20.9%	1.9%	20.0%
Two-Tier Promotion and Habilitation	6.5%	7.3%	0.7%	20.0%
Centralistic Model With State Approbation	0.0%	3.7%	0.2%	20.0%
Other or No System	29.0%	43.5%	3.2%	19.9%

Source: AACSB Staff Compensation and Demographics Survey (2020–21)

Tenure (AAUP-Like System): This is the most common form of tenure. It was defined in the 1940 Statement of Principles on Academic Freedom and Tenure. It was jointly formulated by the American Association of University Professors (AAUP) and the Association of American Colleges & Universities (AAC&U).

Probation on the Job: Common in the United Kingdom, schools using this model offer permanent employment at an early point in a faculty member’s career. However, there is a probationary period of several years.

Two-Tier Promotion and Habilitation: Common in Central Europe, in this model academics receive permanent employment at a later career stage. To get a permanent contract and professorship, academics typically need to obtain additional qualifications (e.g., “habilitation”). They demonstrate not only research skills and excellence in their area of expertise but also teaching qualifications in their field.

Centralistic Model With State Approbation: Common in France, junior academics can apply for a permanent position and receive civil servant status. In order to be promoted to a more senior position, they must undergo a process similar to the habilitation model.

BUSINESS UNIT

Decision-Making Authority¹

Excluding schools that are entirely independent (Type C), participating business schools indicate their level of decision-making authority for various functions they carry out.

Decision	Parent Inst. Makes Decisions Centrally	B-School and Parent Make Decisions Jointly	B-School Makes Decisions Independently	Other
Determining Teaching Loads	57	316	240	5
Development	103	464	46	5
Financial Management	65	496	53	4
Fundraising Efforts	86	456	67	9
Management of Overhead Expenses	211	338	64	5

Source: AACSB BSQ Finances Module (2020-21)

¹Schools were also allowed to indicate "Other" when applicable. Nine or fewer schools indicated "Other" for any given option.

BUSINESS UNIT

Functional Control

The following table indicates which entity maintains functional control over various services or facilities offered by the business school.

Function or Facility	N Institutions	University/ Parent Institution*	Jointly*	Business School	Independent
Business School or Program Building	825	24.1%	45.3%	30.4%	0.1%
Business Library	790	44.1%	38.7%	16.7%	0.5%
Career Services—Undergraduate Business	765	36.5%	40.8%	22.5%	0.3%
Career Services—Graduate Business	790	27.2%	33.8%	38.5%	0.5%
Admissions—Undergraduate Business	768	55.5%	31.6%	12.1%	0.8%
Admissions—Graduate Business	799	12.5%	47.4%	39.7%	0.4%
Development	825	14.8%	56.4%	28.4%	0.5%
Communications	824	9.5%	60.7%	29.6%	0.2%
Business Alumni Relations	825	15.6%	59.9%	23.3%	1.2%
Academic Advising—Undergraduate Business	767	4.6%	32.5%	62.8%	0.1%
Academic Advising—Graduate Business	799	2.3%	12.5%	85.0%	0.3%
Information Technology	825	41.0%	44.0%	14.7%	0.4%
Business Research Center	626	7.5%	21.7%	70.6%	0.2%
Academic Assistance Center	803	31.8%	39.4%	28.8%	0.1%
Non-Degree Executive Education Center	588	19.7%	17.2%	62.4%	0.7%
Student Residential Housing	754	87.1%	3.7%	4.1%	5.0%
Internship Programs	803	6.4%	36.6%	56.8%	0.2%

Source: AACSB BSQ Finances Module (2020–21)

Note: Only schools that indicated that the above functions exist at their institution are included in the N's above.

* These columns are not applicable to independent institutions (Type C).

BUSINESS UNIT

Stakeholders

For each stakeholder type, schools rated the level of involvement in and influence on decisions about the annual business school operating budget and resource allocation using the scale below.

Level	Involvement	Influence
1	Does not participate/offer input	Input never impacts decisions
2	Minimal participation/input	Input not likely to impact decisions
3	Moderate participation/input	Some input may impact decisions
4	Significant participation/input	Input is likely to impact decisions
5	Sole responsibility	Input essentially determines decision outcomes

Stakeholder Involvement and Influence—Distribution

Stakeholder	Type	1	2	3	4	5
Accrediting Bodies	Influence	23.3%	17.7%	34.3%	22.5%	2.2%
	Involvement	38.7%	25.8%	22.4%	11.4%	1.7%
Business School Advisory Council	Influence	21.0%	30.5%	37.9%	8.8%	1.9%
	Involvement	24.8%	38.0%	27.8%	7.9%	1.4%
Business School Faculty	Influence	13.0%	27.6%	43.6%	14.3%	1.6%
	Involvement	15.7%	36.5%	32.9%	13.8%	1.1%
Business School Dean/Dean's Office	Influence	0.3%	0.6%	10.0%	53.3%	35.7%
	Involvement	0.2%	1.3%	8.9%	60.0%	29.7%
Business School Department Heads	Influence	5.9%	12.4%	41.2%	36.8%	3.7%
	Involvement	5.7%	15.6%	39.3%	35.1%	4.2%
Donors	Influence	29.1%	29.8%	33.7%	6.7%	0.7%
	Involvement	41.0%	35.3%	20.1%	3.6%	–
Faculty Union(s)	Influence	61.9%	14.8%	16.1%	6.4%	0.9%
	Involvement	68.1%	16.3%	10.1%	4.8%	0.7%
Domestic Government Agencies	Influence	40.3%	16.7%	20.5%	18.0%	4.4%
	Involvement	51.7%	19.2%	15.6%	11.2%	2.3%
University Provost/Chief Academic Officer*	Influence	2.8%	3.5%	20.8%	59.0%	13.8%
	Involvement	4.2%	9.8%	29.1%	51.8%	5.1%
Students	Influence	34.4%	27.3%	31.2%	5.2%	1.9%
	Involvement	45.1%	30.5%	18.7%	4.7%	1.0%
University Faculty (e.g., Faculty Senate)*	Influence	32.5%	33.7%	25.4%	7.2%	1.2%
	Involvement	39.6%	34.4%	18.9%	6.1%	0.9%
University Finance Office*	Influence	4.4%	9.1%	29.1%	46.3%	11.1%
	Involvement	5.9%	12.0%	28.6%	48.4%	5.1%

Source: AACSB BSQ Finances Module (2020–21)

* These rows are not applicable to independent institutions (Type C).



UNIVERSITY OF CALIFORNIA, RIVERSIDE SCHOOL OF BUSINESS

A. GARY ANDERSON GRADUATE SCHOOL OF MANAGEMENT

**Rigorous STEM MBA and STEM Specialty Master's Programs
in Accounting, Finance and Business Analytics**

- Innovative Teaching
- World Class Faculty
- Impactful Research
- #1 in Social Mobility

business.ucr.edu

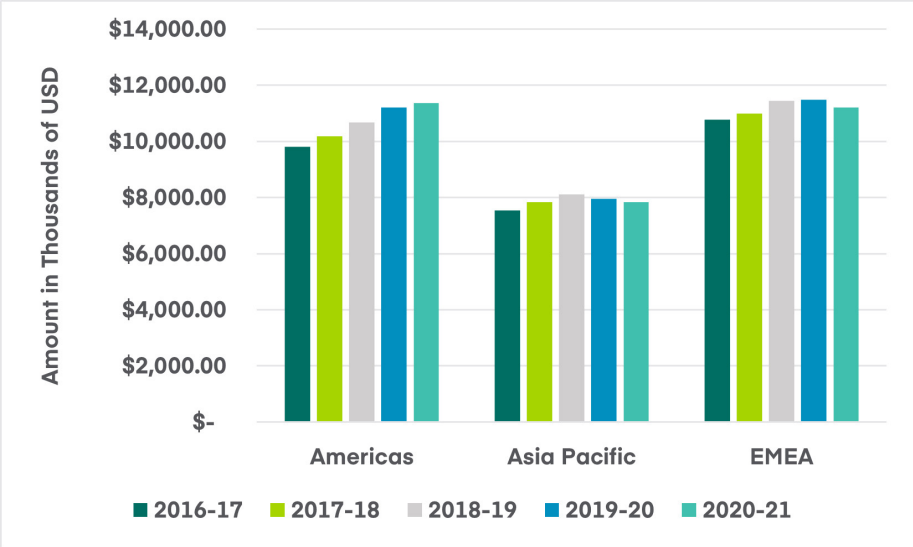
UC RIVERSIDE | School of
Business
A. GARY ANDERSON GRADUATE SCHOOL OF MANAGEMENT

FINANCES

FINANCES

Business school operating budgets have increased steadily over the last five years. Budgets per enrolled student in the Americas have seen consistent year-over-year gains, while those in Asia Pacific and EMEA have experienced greater fluctuation.

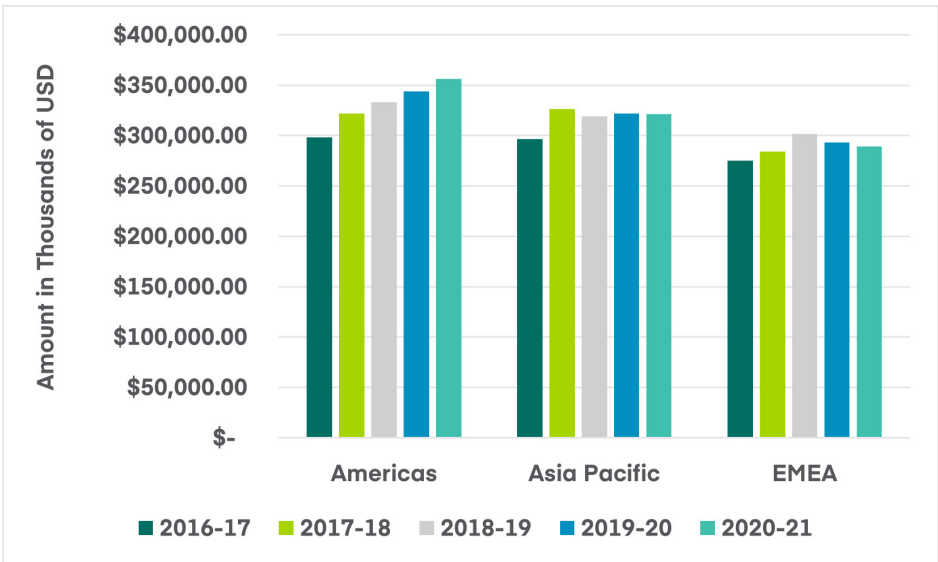
OPERATING BUDGET PER ENROLLMENT



Source: BSQ Finances Module

The operating budget per full-time equivalent faculty member peaked in the Americas in 2020-21 at over 350,000 USD. All world regions have experienced FTE budget increases, but these gains have not steadily accrued.

OPERATING BUDGET PER FTE FACULTY



Source: BSQ Finances Module

FINANCES

Business School Operations

OPERATING BUDGET AND ENDOWMENT MARKET VALUE (IN USD)

	N Institutions	Mean	Std. Dev.	25th Percentile	Median	75th Percentile	Total
Operating Budget	826	30.45M	39.65M	7.26M	15.19M	37.24M	25.15B
Endowment	826	27.92M	69.49M	0.00M	3.89M	20.98M	23.06B

Source: AACSB BSQ Finances Module (2020–21)

OPERATING BUDGET—DISTRIBUTION (IN USD)

Interval	N Institutions	Percentage
2,500,000 or Less	36	4.4%
2,500,001–5,000,000	90	10.9%
5,000,001–10,000,000	174	21.1%
10,000,001–25,000,000	239	28.9%
25,000,001–50,000,000	138	16.7%
50,000,001–100,000,000	100	12.1%
100,000,001–200,000,000	41	5.0%
200,000,000+	8	1.0%

Source: AACSB BSQ Finances Module (2020–21)

ENDOWMENT MARKET VALUE—DISTRIBUTION (IN USD)

Interval	N Institutions	Percentage
0*	242	29.3%
1–2,500,000	134	16.2%
2,500,001–5,000,000	57	6.9%
5,000,001–10,000,000	90	10.9%
10,000,001–25,000,000	121	14.6%
25,000,001–50,000,000	67	8.1%
50,000,001–100,000,000	50	6.1%
100,000,001–200,000,000	43	5.2%
200,000,000+	22	2.7%

Source: AACSB BSQ Finances Module (2020–21)

*In this context, an endowment market value of 0 USD means that the school has no specific endowment for the business unit.

FINANCES

Uses of Operating Funds

USES OF OPERATING FUNDS BY EXPENDITURE TYPE²

Uses of Operating Funds	Salary Expenditures		Non-Salary Expenditures		Total Expenditures	
	N Institutions	Percentage	N Institutions	Percentage	N Institutions	Percentage
Degree Programs Instructional Activity	252	52.3%	207	13.1%	264	40.1%
Total Benefits Compensation	176	14.2%	36	6.7%	203	11.6%
Research	161	9.1%	184	4.9%	208	7.7%
Public Service	66	0.7%	74	0.6%	84	0.7%
Non-Degree Management Education Instruction: Total	92	2.0%	94	3.8%	106	2.8%
Library	26	0.3%	76	1.6%	79	0.7%
Technology	114	1.8%	187	5.0%	194	2.8%
Student Services and Admissions	141	4.9%	149	4.6%	171	4.9%
Scholarships	21	0.3%	174	19.0%	181	5.9%
Administrative Support	192	7.3%	161	8.5%	216	7.5%
Auxiliary Enterprises	25	0.3%	36	1.0%	39	0.5%
Physical Plant	54	0.7%	140	10.9%	146	3.9%
Faculty/Staff Recruiting Expenditures	34	0.4%	129	0.4%	137	0.4%
Alumni Programs/ Services	63	0.5%	100	0.6%	107	0.5%
Marketing and Advertising	107	1.5%	180	5.5%	187	2.8%
Other	69	1.9%	138	10.1%	147	4.6%

Source: AACSB BSQ Finances Module (2020–21)

²Respondents could provide total expenditures or break out total expenditures by salary and nonsalary expenditures. The total expenditures column includes schools that provided either level of detail.

FINANCES

Sources of Funds

SOURCES OF OPERATING FUNDS

Macro Region	Source of Funds	N Institutions	Percentage of Total Sources of Operating Funds
Asia Pacific	General Tuition and Fees Revenue, Government Appropriations, and Institutional/University Allocations	37	78.1%
Asia Pacific	Other Charges to Students for Educational Purposes	9	3.2%
Asia Pacific	Government Grants and Contracts: Total	24	5.0%
Asia Pacific	Private Contracts: Total	20	2.3%
Asia Pacific	Non-Degree Management Education: Total	21	4.3%
Asia Pacific	Private Gifts and Grants: Current Operations: Restricted	13	0.5%
Asia Pacific	Private Gifts and Grants: Current Operations: Unrestricted	5	0.7%
Asia Pacific	Funds From Business Unit Endowment: Total	6	0.1%
Asia Pacific	Unspent Reserve Funds From Previous Years	8	3.0%
Asia Pacific	Other Sources of Operating Funds	20	2.7%
Asia Pacific	Total From All Sources of Operating Funds	37	100.0%
Europe, Middle East, Africa	General Tuition and Fees Revenue, Government Appropriations, and Institutional/University Allocations	65	80.5%
Europe, Middle East, Africa	Other Charges to Students for Educational Purposes	15	1.0%
Europe, Middle East, Africa	Government Grants and Contracts: Total	43	3.5%
Europe, Middle East, Africa	Private Contracts: Total	44	2.2%
Europe, Middle East, Africa	Non-Degree Management Education: Total	36	7.8%
Europe, Middle East, Africa	Private Gifts and Grants: Current Operations: Restricted	16	0.7%

Source: AACSB BSQ Finances Module (2020–21)

FINANCES

Sources of Funds

SOURCES OF OPERATING FUNDS

Macro Region	Source of Funds	N Institutions	Percentage of Total Sources of Operating Funds
Europe, Middle East, Africa	Private Gifts and Grants: Current Operations: Unrestricted	13	0.3%
Europe, Middle East, Africa	Funds From Business Unit Endowment: Total	11	1.0%
Europe, Middle East, Africa	Unspent Reserve Funds From Previous Years	3	0.5%
Europe, Middle East, Africa	Other Sources of Operating Funds	36	2.5%
Europe, Middle East, Africa	Total From All Sources of Operating Funds	65	100.0%
Americas	General Tuition and Fees Revenue, Government Appropriations, and Institutional/University Allocations	270	76.6%
Americas	Other Charges to Students for Educational Purposes	95	3.5%
Americas	Government Grants and Contracts: Total	116	1.7%
Americas	Private Contracts: Total	76	0.7%
Americas	Non-Degree Management Education: Total	100	1.7%
Americas	Private Gifts and Grants: Current Operations: Restricted	193	3.0%
Americas	Private Gifts and Grants: Current Operations: Unrestricted	144	1.3%
Americas	Funds From Business Unit Endowment: Total	177	3.9%
Americas	Unspent Reserve Funds From Previous Years	85	5.2%
Americas	Other Sources of Operating Funds	122	2.4%
Americas	Total From All Sources of Operating Funds	270	100.0%

Source: AACSB BSQ Finances Module (2020–21)

FINANCES

Fundraising

MEAN PERCENTAGES OF PRIVATE GIFTS AND GRANTS ACROSS ALL REPORTED SOURCES FOR PARTICIPATING SCHOOLS

Donation Type	N Institutions	Donations From Corporations	Donations From Individuals: Total	Donations From Private Charitable Organizations/ Foundations	Donations From Public Organizations/ Foundations
Capital Purposes: Donations Made for Long-Term Development (e.g., Equipment, Buildings, Loan Funds, etc.)	69	15.1%	56.4%	20.0%	8.5%
Current Operations—Restricted: Donations Made for Immediate Use (e.g., Research Projects, Endowed Chairs, or Professorships, etc.) Is Specified by the Donor	142	24.0%	49.5%	19.6%	7.0%
Current Operations—Unrestricted: Donations Made for Immediate Use Where the Use Is Not Specified by the Donor	98	17.3%	63.9%	10.4%	8.3%

Source: AACSB BSQ Finances Module (2020–21)

FINANCES

Net Flow of Funds for All Institutions (Negative, Balanced, or Positive)

A positive net flow figure indicates that the net flow favors the parent institution, and, therefore, the business school is generating funds for the parent institution. Conversely, a negative net flow figure suggests that the net flow favors the business school, indicating that more funds are flowing from the parent institution to support the business school. A net flow of 0 indicates that the financial flow from business school to parent institution, and those from parent institution to business school, balance one another out.

Net Flow of Funds for All Institutions (Below, at, or Above Zero)

Net Flow Bucket	N Institutions	Percentage
Positive	112	81.8%
Balanced (0)	9	6.6%
Negative	16	11.7%

Source: AACSB BSQ Finances Module (2020–21)

Net Flow of Funds by Institutional Control in USD

Institutional Control	N Institutions	Minimum	Mean	Std. Dev.	Maximum
All	137	-87.40M	15.48M	28.78M	126.43M
Educational—Private	59	-40.15M	17.17M	26.85M	126.43M
Educational—Public	78	-87.40M	14.20M	30.26M	115.84M

Source: AACSB BSQ Finances Module (2020–21)



BETA ALPHA PSI

Founded in 1919, Beta Alpha Psi is an honors organization for financial information students and professionals. There are over 300 chapters on college and university campuses with over 300,000 members initiated since Beta Alpha Psi's formation.

All of our chapters reside at AACSB-accredited business schools. Beta Alpha Psi is a proud member of the AACSB Business Education Alliance. We are not a fraternity or sorority, but an honors organization.

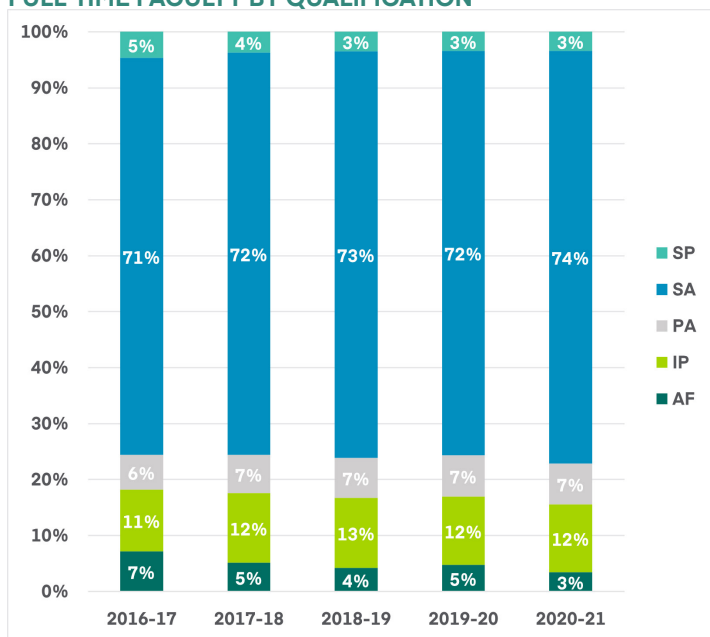
To start a chapter at your school, go to bap.org/join today!

FACULTY, STAFF,
AND
ADMINISTRATORS

FACULTY, STAFF, AND ADMINISTRATORS

Scholarly Academics have always represented the vast majority of faculty in terms of their qualifications, and this imbalance has become greater over the last several years, with SA-qualified faculty representing roughly three out of every four faculty members.

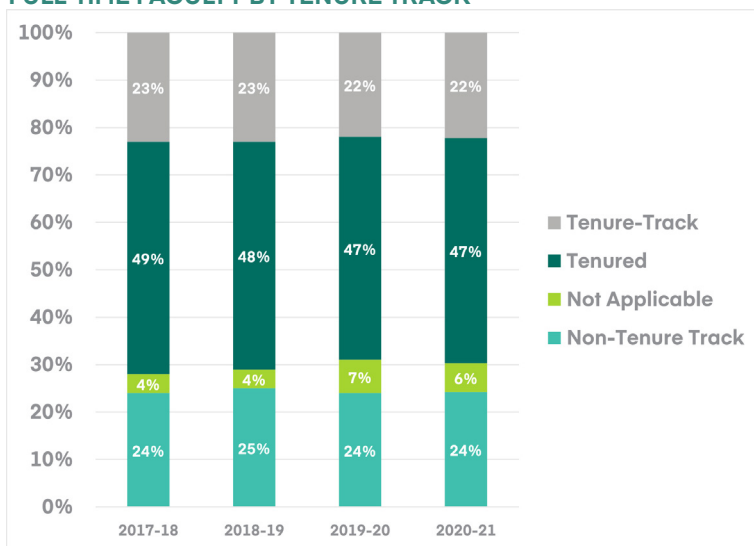
FULL-TIME FACULTY BY QUALIFICATION



Source: Staff Compensation & Demographics Survey

The allocation of faculty by their tenure-track status has held steadily over the last four years, with only very slight declines in those with tenure and on the tenure-track.

FULL-TIME FACULTY BY TENURE TRACK

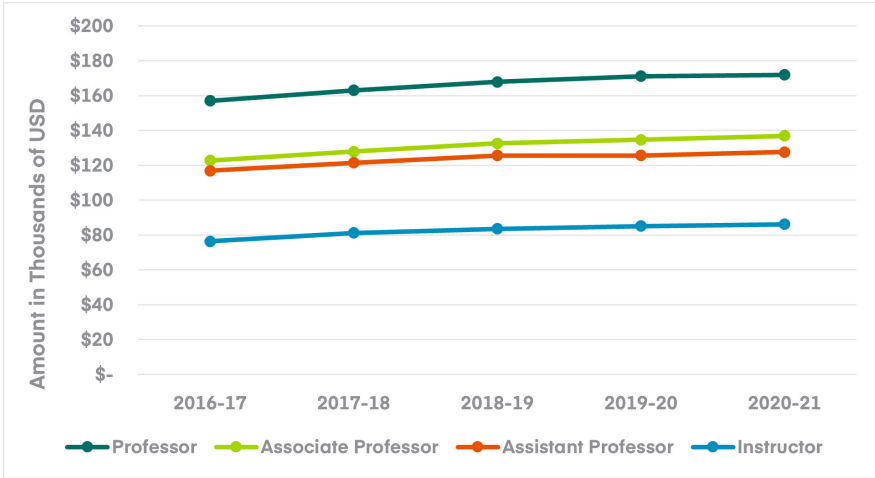


Source: Staff Compensation & Demographics Survey

FACULTY, STAFF, AND ADMINISTRATORS

Salary for full-time faculty members has been a steady, predictable growth across all faculty ranks over the last five years.

FULL-TIME SALARY BY RANK



Source: Staff Compensation & Demographics Survey

FACULTY, STAFF, AND ADMINISTRATORS

Headcounts

HEADCOUNTS BY PERSONNEL TYPE

Personnel	N Institutions	Mean	Std. Dev.	Total
Full-Time Faculty	832	81	66	67,019
Full-Time Faculty with Doctoral Degrees	818	69	56	56,099
Part-Time Faculty (Excl. Graduate Teaching Assistants)	805	50	74	40,645
Graduate Teaching Assistants	156	25	62	3,873
Full-Time Business School Staff and Administrators	827	69	107	57,465
Total Headcount of All People Employed by Business Unit	832	271	308	225,670

Source: AACSB Staff Compensation and Demographics Survey (2020–21)

FACULTY, STAFF, AND ADMINISTRATORS

Headcounts

HEADCOUNTS BY GENDER

Personnel	Gender	N Institutions	Total Headcount	Percentage
Full-Time Faculty	Female	788	22,171	35.6%
	Male	789	40,118	64.4%
Full-Time Faculty With Doctoral Degrees	Female	741	16,916	34.2%
	Male	743	32,476	65.8%
Part-Time Faculty (Excl. Graduate Teaching Assistants)	Female	639	10,120	32.1%
	Male	669	21,426	67.9%
Graduate Teaching Assistants	Female	119	1,375	41.3%
	Male	125	1,954	58.7%
Full-Time Business School Staff	Female	665	28,229	67.5%
	Male	609	13,588	32.5%

Source: AACSB Staff Compensation and Demographics Survey (2020–21)

GENDER RATIOS BY FULL-TIME FACULTY RANK

Faculty Rank	Gender	N Faculty	Percentage
Professor	Female	2,335	23.5%
	Male	7,553	76.0%
	Other/Not Reported	50	0.5%
Associate Professor	Female	3,324	34.4%
	Male	6,328	65.5%
	Other/Not Reported	9	0.1%
Assistant Professor	Female	3,845	39.2%
	Male	5,954	60.7%
	Other/Not Reported	9	0.1%
Instructor	Female	3,050	40.8%
	Male	4,425	59.2%
	Other/Not Reported	4	0.1%

Source: AACSB Staff Compensation and Demographics Survey (2020–21)

FACULTY, STAFF, AND ADMINISTRATORS

Gender Ratios

GENDER RATIOS BY FULL-TIME FACULTY CITIZENSHIP STATUS

Region	Citizenship Status	Gender	N Institutions	Total Headcount	Percentage
Asia Pacific	Host Country/ Territory	Female	93	2,308	36.8%
		Male	93	3,970	63.2%
Asia Pacific	Other Country/ Territory of Origin or Birthplace	Female	93	891	34.9%
		Male	93	1,662	65.1%
Europe, Middle East, Africa	Host Country/ Territory	Female	138	3,677	39.4%
		Male	139	5,660	60.6%
Europe, Middle East, Africa	Other Country/ Territory of Origin or Birthplace	Female	138	2,118	36.3%
		Male	139	3,717	63.7%
Americas	Host Country/ Territory	Female	507	9,919	33.8%
		Male	507	19,416	66.2%
Americas	Other Country/ Territory of Origin or Birthplace	Female	507	883	35.7%
		Male	507	1,589	64.3%

Source: AACSB Staff Compensation and Demographics Survey (2020–21)

GENDER RATIOS BY FULL-TIME FACULTY TENURE STATUS³

Tenure Status	Gender	N Institutions	Total Headcount	Percentage
Tenured	Female	622	7,239	30.1%
	Male	624	16,827	69.9%
Tenure-Track	Female	620	4,101	38.7%
	Male	622	6,491	61.3%
Non-Tenure Track	Female	604	4,255	39.8%
	Male	607	6,435	60.2%

Source: AACSB Staff Compensation and Demographics Survey (2020–21)

³Status pertains to schools reporting AAUP-style tenure systems.

FACULTY, STAFF, AND ADMINISTRATORS

Gender Ratios

GENDER RATIOS BY FULL-TIME FACULTY ETHNICITY (U.S. ONLY)

Ethnicity	Gender	N Institutions	Total Headcount	Percentage
American Indian or Alaskan Native	Female	252	23	35.4%
	Male	262	42	64.6%
Asian or Pacific Islander	Female	420	1,950	35.5%
	Male	437	3,545	64.5%
Black or African American, Non-Hispanic	Female	360	520	41.6%
	Male	374	729	58.4%
Hispanic/Latino	Female	305	271	31.8%
	Male	346	580	68.2%
White, Non-Hispanic	Female	451	5,924	33.0%
	Male	451	12,028	67.0%
Two or More Races	Female	240	52	37.1%
	Male	244	88	62.9%
Race/Ethnicity Unknown	Female	563	1,356	34.0%
	Male	580	2,637	66.0%

Source: AACSB Staff Compensation and Demographics Survey (2020–21)

FACULTY, STAFF, AND ADMINISTRATORS

Gender Ratios

GENDER RATIOS BY ADMINISTRATIVE POSITION

Administrative Position	Gender	N Administrators	Percentage
Accreditation Manager/ Director	Female	25	67.6%
	Male	12	32.4%
Associate Dean	Female	355	38.9%
	Male	558	61.1%
Assistant Dean	Female	120	61.9%
	Male	74	38.1%
Assistant Dean or Director: Career Services/Placement	Female	120	69.4%
	Male	53	30.6%
Assistant Dean or Director: Development	Female	50	53.8%
	Male	43	46.2%
Assistant Dean or Director: Executive Education	Female	38	43.7%
	Male	49	56.3%
Assistant Dean or Director: Finance and Administration	Female	119	65.7%
	Male	62	34.3%
Assistant Dean or Director: Graduate Programs	Female	118	47.0%
	Male	133	53.0%
Assistant Dean or Director: Information Technology	Female	18	14.6%
	Male	105	85.4%
Assistant Dean or Director: MBA Programs	Female	71	49.7%
	Male	72	50.3%
Assistant Dean or Director: Undergraduate Programs	Female	146	64.9%
	Male	79	35.1%
Dean	Female	147	29.1%
	Male	358	70.9%
Director of Business Library Services	Female	9	50.0%
	Male	9	50.0%
Director of Communications/PR	Female	121	70.8%
	Male	50	29.2%
Director of Cooperative Programs	Female	22	57.9%
	Male	16	42.1%
Director of Distance Education	Female	16	66.7%
	Male	8	33.3%

FACULTY, STAFF, AND ADMINISTRATORS

Gender Ratios

GENDER RATIOS BY ADMINISTRATIVE POSITION

Administrative Position	Gender	N Administrators	Percentage
Director of Internship	Female	37	68.5%
	Male	17	31.5%
Director of Research	Female	15	24.6%
	Male	46	75.4%
Executive Education Business Development Director	Female	2	22.2%
	Male	7	77.8%
Executive Education Program Director/Director of Client Solutions	Female	4	30.8%
	Male	9	69.2%
Executive Education Program Logistics Manager/Coordinator	Female	9	75.0%
	Male	3	25.0%
Executive MBA (EMBA) Director	Female	43	51.2%
	Male	41	48.8%
Major Gifts Officer	Female	29	46.0%
	Male	34	54.0%
MBA/Master's Admissions Director	Female	75	59.5%
	Male	51	40.5%
School of Accounting, Director, etc.	Female	8	30.8%
	Male	18	69.2%
Small Business Administration Director	Female	39	52.0%
	Male	36	48.0%
Other	Female	662	55.5%
	Male	530	44.5%

Source: Staff Compensation and Demographics Survey (2020-21)

FACULTY, STAFF, AND ADMINISTRATORS

General Demographics

FULL-TIME FACULTY HEADCOUNTS BY TENURE STATUS⁴

Tenure Status	N Institutions	Total Faculty	Percentage
Tenured	641	25,050	53.5%
Tenure-Track	639	10,881	23.2%
Non-Tenure Track	631	10,927	23.3%

Source: AACSB Staff Compensation and Demographics Survey (2020–21)

FULL-TIME FACULTY HEADCOUNTS BY CITIZENSHIP STATUS

Region	Citizenship Status	N Institutions	N Faculty	Percentage
Asia Pacific	Host Country/ Territory	112	8,286	73.5%
Asia Pacific	Other Country/ Territory of Origin or Birthplace	112	2,987	26.5%
Europe, Middle East, Africa	Host Country/ Territory	164	10,678	61.6%
Europe, Middle East, Africa	Other Country/ Territory of Origin or Birthplace	164	6,645	38.4%
Americas	Host Country/ Territory	553	31,756	91.8%
Americas	Other Country/ Territory of Origin or Birthplace	546	2,845	8.2%

Source: AACSB Staff Compensation and Demographics Survey (2020–21)

⁴ Status pertains to schools reporting AAUP-style tenure systems.

FACULTY, STAFF, AND ADMINISTRATORS

General Demographics

FULL-TIME FACULTY HEADCOUNTS BY ETHNICITY (U.S. ONLY)

Ethnicity	N Institutions	Total Faculty	Percentage
American Indian or Alaskan Native	303	70	0.2%
Asian or Pacific Islander	478	5,914	17.6%
Black or African American, Non-Hispanic	438	1,320	3.9%
Hispanic/Latino	397	938	2.8%
White, Non-Hispanic	484	19,125	57.0%
Two or More Races	281	141	0.4%
Race/Ethnicity Unknown	675	6,072	18.1%

Source: AACSB Staff Compensation and Demographics Survey (2020–21)

FACULTY, STAFF, AND ADMINISTRATORS

Salary

FULL-TIME FACULTY SALARIES BY RANK AND DISCIPLINE—
PROFESSOR (IN THOUSANDS, USD)

Discipline	N Institutions	Total Faculty	Mean	Std. Dev.	Median
Accounting	394	1,152	186.10	75.12	164.30
Actuarial Science	3	3	–	–	–
Behavioral Science/ Organizational Behavior	131	312	203.28	76.83	197.34
Business Communication	25	53	113.79	40.08	114.10
Business Education	6	23	33.01	50.83	4.31
Business Ethics— Including Corporate Social Responsibility	40	64	146.15	59.06	134.65
Business Law/ Legal Environment	118	185	130.47	45.60	119.30
CIS/MIS	301	825	162.09	57.94	151.00
Data Analytics	29	40	167.18	68.34	164.35
E-Business—Including E-Commerce	6	7	180.81	87.11	148.90
Economics/ Managerial Economics	276	936	151.03	68.76	130.15
Energy Management	5	6	–	–	–
Entrepreneurship/Small Business Administration	101	180	167.06	74.35	154.35
Finance—Including Banking	415	1,455	199.42	95.83	169.33
General Business	9	21	114.08	59.26	94.71
Health Services/ Hospital Administration	19	25	139.47	57.20	123.80
Hotel/ Restaurant/ Tourism	34	66	123.99	34.13	120.25
HR Management— Including Personnel and Individual/Labor Relations	108	192	145.54	63.11	133.70

Source: AACSB Staff Compensation and Demographics Survey (2020–21)

FACULTY, STAFF, AND ADMINISTRATORS

Salary

FULL-TIME FACULTY SALARIES BY RANK AND DISCIPLINE—
PROFESSOR (IN THOUSANDS, USD)

Discipline	N Institutions	N Faculty	Mean	Std. Dev.	Median
Insurance	26	43	185.10	67.50	174.40
International Business	84	151	154.43	64.50	145.00
Leadership	16	25	168.13	66.60	166.20
Management	297	857	151.26	62.49	133.58
Manufacturing and Technology Management	2	2	–	–	–
Marketing	420	1,282	176.44	76.91	151.95
Operations Research	32	52	182.42	59.51	186.15
Production/Operations Management	186	440	181.94	72.04	168.20
Public Administration	9	24	105.00	51.05	117.00
Quantitative Methods	61	121	151.84	61.85	143.20
Real Estate	44	65	201.48	76.13	202.20
Sports Management	16	24	121.01	24.90	122.00
Statistics	46	94	160.89	70.23	158.65
Strategic Management	155	393	188.11	86.49	176.14
Supply Chain/Transport/Logistics	78	151	171.93	64.24	175.00
Taxation	27	33	165.48	44.47	158.69
Other	21	68	103.09	71.71	98.55

Source: AACSB Staff Compensation and Demographics Survey (2020–21)

FACULTY, STAFF, AND ADMINISTRATORS

Salary

FULL-TIME FACULTY SALARIES BY RANK AND DISCIPLINE—
ASSOCIATE PROFESSOR (IN THOUSANDS, USD)

Discipline	N Institutions	N Faculty	Mean	Std. Dev.	Median
Accounting	441	1,423	156.39	52.63	146.70
Actuarial Science	9	11	120.59	35.31	130.70
Behavioral Science/ Organizational Behavior	130	348	146.01	51.55	146.20
Business Communication	32	64	92.61	27.90	87.85
Business Education	4	5	–	–	–
Business Ethics— Including Corporate Social Responsibility	30	40	107.64	48.63	104.70
Business Law/ Legal Environment	103	188	105.48	34.76	104.73
CIS/MIS	292	705	132.98	36.86	129.40
Data Analytics	40	64	134.46	37.06	131.61
E-Business—Including E-Commerce	6	7	95.91	32.44	99.23
Economics/ Managerial Economics	268	811	114.50	39.34	107.30
Energy Management	4	7	–	–	–
Entrepreneurship/Small Business Administration	107	191	123.08	42.96	121.30
Finance—Including Banking	407	1,271	159.65	61.04	148.50
General Business	8	23	94.32	44.88	87.43
Health Services/ Hospital Administration	22	31	120.55	32.68	119.20
Hotel/Restaurant/Tourism	31	73	108.23	24.83	103.90
HR Management— Including Personnel and Individual/Labor Relations	109	185	111.85	44.87	110.00

Source: AACSB Staff Compensation and Demographics Survey (2020–21)

FACULTY, STAFF, AND ADMINISTRATORS

Salary

FULL-TIME FACULTY SALARIES BY RANK AND DISCIPLINE – ASSOCIATE PROFESSOR (IN THOUSANDS, USD)

Discipline	N Institutions	N Faculty	Mean	Std. Dev.	Median
Insurance	23	30	152.39	39.00	153.20
International Business	64	106	121.40	41.47	117.40
Leadership	15	24	124.01	33.76	122.05
Management	303	866	125.60	38.27	120.15
Manufacturing and Technology Management	3	4	–	–	–
Marketing	426	1,234	136.23	44.17	131.71
Operations Research	35	49	131.80	44.00	139.00
Production/Operations Management	169	366	142.76	45.36	138.90
Public Administration	12	18	92.95	34.09	104.45
Quantitative Methods	52	97	123.00	47.44	119.43
Real Estate	26	42	155.69	66.09	148.09
Sports Management	16	26	105.41	24.83	99.75
Statistics	39	73	116.57	53.90	118.00
Strategic Management	171	363	141.71	51.13	138.20
Supply Chain/Transport/Logistics	97	192	133.44	42.52	134.90
Taxation	27	34	143.11	43.98	133.89
Other	29	84	78.21	47.41	74.95

Source: AACSB Staff Compensation and Demographics Survey (2020–21)

FACULTY, STAFF, AND ADMINISTRATORS

Salary

FULL-TIME FACULTY SALARIES BY RANK AND DISCIPLINE – ASSISTANT PROFESSOR (IN THOUSANDS, USD)

Discipline	N Institutions	N Faculty	Mean	Std. Dev.	Median
Accounting	448	1,584	150.63	52.93	145
Actuarial Science	5	11	NA	NA	NA
Behavioral Science/ Organizational Behavior	116	280	132.39	48.17	138.95
Business Communication	39	77	83.7	23.15	79.9
Business Education	4	9	NA	NA	NA
Business Ethics— Including Corporate Social Responsibility	16	30	82.41	39.02	66.47
Business Law/ Legal Environment	84	134	91.42	29.43	89.3
CIS/MIS	253	749	120.51	38.39	122
Data Analytics	83	155	123.81	32.21	125
E-Business—Including E-Commerce	4	4	NA	NA	NA
Economics/ Managerial Economics	237	727	102.86	34.72	97.49
Energy Management	4	8	NA	NA	NA
Entrepreneurship/Small Business Administration	125	201	114.67	38.38	117
Finance—Including Banking	390	1,289	157.01	59.67	150
General Business	8	28	66.29	38.46	50.41
Health Services/ Hospital Administration	28	37	101.91	25.15	99.5
Hotel/Restaurant/Tourism	28	61	90.19	19.95	87.00
HR Management— Including Personnel and Individual/Labor Relations	87	145	101.57	39.34	105.00

Source: AACSB Staff Compensation and Demographics Survey (2020–21)

FACULTY, STAFF, AND ADMINISTRATORS

Salary

FULL-TIME FACULTY SALARIES BY RANK AND DISCIPLINE – ASSISTANT PROFESSOR (IN THOUSANDS, USD)

Discipline	N Institutions	N Faculty	Mean	Std. Dev.	Median
Insurance	11	20	144.59	40.32	145.67
International Business	46	85	103.03	41.37	100.00
Leadership	13	21	106.88	35.82	112.70
Management	324	967	111.42	36.09	110.00
Manufacturing and Technology Management	5	5	NA	NA	NA
Marketing	417	1,217	127.32	41.35	125.00
Operations Research	27	62	128.99	45.35	135.65
Production/Operations Management	148	371	131.85	40.74	135.00
Public Administration	7	21	60.36	37.63	60.50
Quantitative Methods	58	107	113.67	43.02	118.20
Real Estate	27	45	139.35	49.94	140.60
Sports Management	20	25	90.03	22.91	92.00
Statistics	28	73	104.21	48.51	115.10
Strategic Management	142	350	129.02	44.75	131.25
Supply Chain/Transport/Logistics	85	179	125.14	39.34	133.40
Taxation	24	29	171.22	53.46	170.00
Other	29	91	60.21	45.60	48.69

Source: AACSB Staff Compensation and Demographics Survey (2020–21)

FACULTY, STAFF, AND ADMINISTRATORS

Salary

FULL-TIME FACULTY SALARIES BY RANK AND DISCIPLINE—
INSTRUCTOR (IN THOUSANDS, USD)

Discipline	N Institutions	N Faculty	Mean	Std. Dev.	Median
Accounting	362	1,274	88.76	33.24	82.36
Actuarial Science	2	3	–	–	–
Behavioral Science/ Organizational Behavior	56	160	96.77	45.46	90.75
Business Communication	104	333	67.82	20.98	62.00
Business Education	11	21	72.53	15.89	71.40
Business Ethics— Including Corporate Social Responsibility	28	43	90.64	42.42	83.60
Business Law/ Legal Environment	152	259	80.29	27.40	74.26
CIS/MIS	210	635	82.28	28.48	77.30
Data Analytics	42	86	95.83	31.30	90.85
E-Business—Including E-Commerce	1	1	–	–	–
Economics/ Managerial Economics	154	420	76.42	30.23	71.50
Energy Management	3	4	–	–	–
Entrepreneurship/Small Business Administration	123	233	92.15	34.89	88.00
Finance—Including Banking	275	819	101.35	39.83	96.80
General Business	39	107	67.50	28.93	63.00
Health Services/ Hospital Administration	21	34	96.16	20.00	95.00
Hotel/Restaurant/Tourism	29	100	83.48	22.86	87.44
HR Management— Including Personnel and Individual/Labor Relations	65	95	78.30	36.26	74.50

Source: AACSB Staff Compensation and Demographics Survey (2020–21)

FACULTY, STAFF, AND ADMINISTRATORS

Salary

FULL-TIME FACULTY SALARIES BY RANK AND DISCIPLINE—
INSTRUCTOR (IN THOUSANDS, USD)

Discipline	N Institutions	N Faculty	Mean	Std. Dev.	Median
Insurance	19	28	96.38	32.90	95.50
International Business	41	67	80.35	31.13	80.00
Leadership	16	24	99.96	36.73	96.15
Management	260	881	79.97	28.70	76.10
Manufacturing and Technology Management	2	2	–	–	–
Marketing	294	824	84.56	30.16	80.80
Operations Research	14	31	85.85	29.99	84.00
Production/Operations Management	103	236	94.54	34.88	89.41
Public Administration	7	10	52.18	28.03	57.37
Quantitative Methods	47	86	83.34	33.75	74.75
Real Estate	28	38	99.44	42.69	91.85
Sports Management	9	19	76.80	17.92	75.70
Statistics	41	70	76.65	27.52	76.60
Strategic Management	68	160	99.27	45.33	88.70
Supply Chain/Transport/Logistics	52	120	90.86	31.61	88.35
Taxation	19	23	98.64	28.49	90.00
Other	25	46	85.85	29.57	81.70

Source: AACSB Staff Compensation and Demographics Survey (2020–21)

FACULTY, STAFF, AND ADMINISTRATORS

Salary

FULL-TIME FACULTY COMPENSATION PRACTICES

Benefit	N Institutions	Percentage of Schools Offering Benefit	Percentage of Faculty Receiving Benefit
Summer Research Funds	548	45.8%	34.4%
Summer Teaching Compensation	548	65.3%	40.6%
Overload/Stipends for Teaching Credit Courses	548	66.2%	68.8%
Stipends for Teaching Non-Credit Courses	548	22.3%	14.3%
Additional Funds for Research	548	36.5%	39.3%
Additional Pay for Administrative Duties (Above and Beyond Teaching/Research)	548	68.2%	17.6%
Additional Pay for Teaching at International Partner Institution(s)	548	7.1%	8.8%
Additional Pay for Production of Intellectual Contributions Beyond Expected Standards	549	14.9%	28.3%
Other	540	15.2%	19.3%

Source: AACSB BSQ Finances Module (2020–21)

Salary

NEWLY HIRED FULL-TIME FACULTY SALARIES

New Hire Type	N Institutions	Total Faculty	Mean	Std. Dev.	Median
All But Dissertation (ABD)	46	79	98.92	51.19	113.4
Neither	359	1,285	116.99	64.64	114.0
New Doctorate	308	923	131.91	48.49	134.5

Source: AACSB Staff Compensation and Demographics Survey (2020–21)

FACULTY, STAFF, AND ADMINISTRATORS

Salary

NEWLY HIRED FULL-TIME FACULTY COMPENSATION PRACTICES

Benefit	N Institutions	Percentage of Schools Offering Compensation
Moving Expenses	559	63.0%
Signing Bonus (Apart From Base Salary)	559	2.9%
Guaranteed Research Funds (1 year)	559	14.8%
Guaranteed Research Funds (2 years)	559	18.8%
Guaranteed Research Funds (3 years)	559	25.6%
Guaranteed Teaching Load Reduction (1 year)	559	22.9%
Guaranteed Teaching Load Reduction (2 years)	559	12.3%
Guaranteed Teaching Load Reduction (3 years)	559	11.6%
Other	559	25.2%

Source: AACSB BSQ Finances Module (2020–21)

FACULTY, STAFF, AND ADMINISTRATORS

Salary

ADMINISTRATOR SALARIES, 12-MONTH CONTRACTS (IN THOUSANDS, USD)

Administrator Position	N Institutions	N Administrators	Mean	Std. Dev.	Median
Accreditation Manager/Director	35	35	93.1	42.5	80.7
Assistant Dean	119	186	123.5	59.6	107.9
Associate Dean	391	868	203.8	84.2	189.5
Assistant Dean or Director of Graduate Programs	149	242	121.8	66.4	112.3
Assistant Dean or Director: Career Services/Placement	161	170	106.3	43.7	96.5
Assistant Dean or Director: Development	82	88	132.4	49.7	126.4
Assistant Dean or Director: Executive Education	80	85	149.3	67.3	142.8
Assistant Dean or Director: Finance and Administration	165	178	116.6	44.3	113.1
Assistant Dean or Director: Information Technology	116	120	114.7	42.5	111.7
Assistant Dean or Director: MBA Programs	118	138	125.1	64.2	121
Assistant Dean or Director: Undergraduate Programs	171	216	107.0	55.2	97.2
Dean	476	479	268.2	120.3	234.6
Director of Business Library Services	18	18	95.8	38.0	96
Director of Communications/ Public Relations	165	170	101.8	44.9	97.3
Director of Cooperative Programs	20	38	105.1	47.4	95.1
Director of Distance Education	21	23	118.9	71.5	98.2
Director of Internship	46	54	66.0	22.8	63.2
Director of Research	40	55	158.8	87.5	139.2
Executive Education Business Development Director	5	9	126.7	33.7	117.8
Executive Education Program Director/Director of Client Solutions	9	13	118.3	46.8	102.9
Executive Education Program Logistics Manager/ Coordinator	7	12	64.9	31.1	54.2
Executive MBA (EMBA) Director	69	79	133.5	54.3	123.9

FACULTY, STAFF, AND ADMINISTRATORS

Administrator Position	N Institutions	N Administrators	Mean	Std. Dev.	Median
Major Gifts Officer	38	63	103.4	31.0	93.3
MBA/Master's Admissions Director	115	124	98.9	38.9	92
Other	210	1075	180.2	364.7	98.5
School of Accounting, Director, etc.	26	26	227.2	85.1	199.4
Small Business Administration Director	72	75	100.3	36.6	94.2

Source: AACSB Staff Compensation and Demographics Survey (2020–21)

Faculty Qualifications

In AACSB's 2020 accreditation standards, Standard 3: Faculty and Professional Staff Resources, definitions are provided for four varieties of faculty qualification statuses. Categories for specifying qualified faculty status are based on the initial academic preparation, initial professional experience, and sustained academic and professional engagement.

FACULTY QUALIFICATION MATRIX

		Sustained Engagement Activities	
		Academic (Research/Scholarly)	Applied/Practices
Initial Academic Preparation and Professional Experience	Professional Experience, Substantial in Duration and Level of Responsibility	Scholarly Practitioners (SP)	Instructional Practitioners (IP)
	Doctoral Degree	Scholarly Academics (SA)	Practice Academics (PA)

Source: 2020 Accreditation Standards, Standard 3

FULL-TIME FACULTY HEADCOUNTS BY QUALIFICATION (AACSB-Accredited Schools Only)

Faculty Qualification	N Institutions	Mean	Std Dev	Total Faculty	Percentage of Participating Faculty*
Scholarly Academics	595	40	58	44,464	89.2%
Practice Academics	560	7	16	7,030	61.1%
Scholarly Practitioners	541	3	10	3,480	58.9%
Instructional Practitioners	588	16	31	17,707	37.4%

Source: AACSB Staff Compensation and Demographics Survey (2020–21)

*Participating faculty members actively and deeply engage in the activities of the school in matters beyond direct teaching responsibilities.

F L O R I D A I N T E R N A T I O N A L U N I V E R S I T Y



NO.2

**UNDERGRADUATE
INTERNATIONAL
BUSINESS PROGRAM**

U.S. News Best Colleges 2020, 2021 and 2022

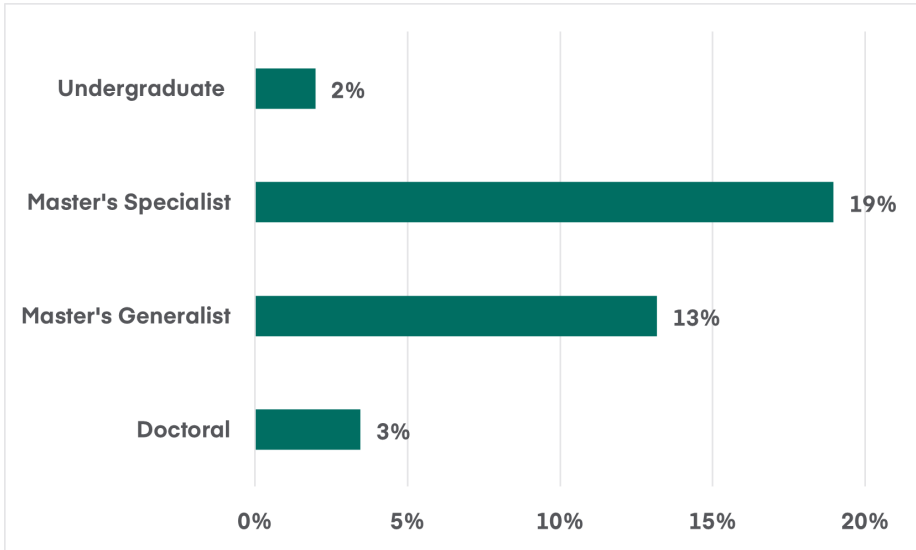


BUSINESS.FIU.EDU

STUDENTS

Over the last five years, master's-level programs have seen notable gains in enrollment, with master's specialist programs growing by nearly 20 percent.

PERCENTAGE CHANGE IN ENROLLMENT, 2016-17 TO 2020-21



Source: BSQ Programs Module

STUDENTS

63 percent of schools which offer an undergraduate program conferred more degrees in 2020-21 than they did in 2016-17, with nearly half of those schools conferring 20 percent more degrees in 2020-21.

DEGREES CONFERRED, 2016-17 TO 2020-21



Source: BSQ Programs Module

STUDENTS

Programs

PERCENTAGE OF DEGREE PROGRAMS BY LEVEL

Program Level	N Institutions	Total Programs	Percentage
Undergraduate	765	7,769	44.1%
Master's Generalist (EMBA)	300	427	2.4%
Master's Generalist (MBA)	702	2,582	14.7%
Master's Generalist (MBA/Dual Degree)	85	320	1.8%
Master's Generalist (Non-MBA)	150	474	2.7%
Master's Specialist	655	4,675	26.6%
Doctoral	403	1,361	7.7%

Source: AACSB BSQ Programs Module (2020–21)

STUDENTS

Programs

PERCENTAGE OF BUSINESS SCHOOLS OFFERING AT LEAST ONE PROGRAM, BY DISCIPLINE AND LEVEL

Discipline	Undergraduate	Master's Generalist	Master's Specialist	Doctoral
Accounting	66.3%	8.4%	55.5%	11.9%
Actuarial Science	1.8%	0.1%	1.0%	0.1%
Arts Administration	0.2%	0.5%	0.9%	–
Behavioral Science/ Organizational Behavior	1.1%	0.7%	3.0%	3.0%
Business Communication	2.1%	0.5%	1.7%	–
Business Education	4.0%	2.2%	1.9%	1.0%
Business Ethics—Including Corporate Social Responsibility	0.5%	0.6%	1.0%	0.2%
Business Law/Legal Environment	3.9%	1.9%	3.0%	0.9%
CIS/MIS	37.3%	7.4%	19.2%	8.2%
Consulting	–	–	0.4%	–
Data Analytics	11.2%	4.4%	20.9%	0.5%
E-Business—Including E-Commerce	1.6%	1.0%	2.9%	–
Economics/Managerial Economics	38.0%	2.9%	15.5%	10.9%
Energy Management	0.5%	0.7%	1.1%	–
Entrepreneurship/Small Business Admin	21.4%	6.6%	11.8%	1.9%
Finance—Including Banking	59.1%	14.7%	40.6%	14.4%
General Business	52.9%	65.8%	8.2%	20.1%
Health Services/Hospital Admin	3.4%	7.5%	7.5%	0.2%
Hotel/Restaurant/Tourism	7.7%	1.0%	4.3%	1.0%
HR Management Incl Personnel and Individual/ Labor Relations	19.2%	5.4%	15.5%	1.3%
Insurance	5.2%	0.5%	1.9%	1.0%
International Business	35.2%	12.9%	15.7%	2.6%
Leadership	1.1%	2.9%	4.1%	0.4%
Management	57.9%	36.0%	24.0%	21.2%
Manufacturing and Technology Management	1.2%	1.1%	1.7%	0.2%
Marketing	57.7%	11.3%	25.1%	10.7%

STUDENTS

Programs

PERCENTAGE OF BUSINESS SCHOOLS OFFERING AT LEAST ONE PROGRAM BY DISCIPLINE AND LEVEL

Discipline	Undergraduate	Master's Generalist	Master's Specialist	Doctoral
Operations Research	0.6%	0.5%	1.0%	2.1%
Production/Operations Management	8.5%	2.2%	5.4%	3.4%
Public Administration	1.2%	1.6%	1.9%	0.1%
Quantitative Methods	2.6%	0.7%	4.1%	0.6%
Real Estate	6.7%	2.2%	4.3%	0.7%
Sports Management	4.7%	1.2%	2.9%	0.1%
Statistics	1.2%	0.4%	1.5%	1.6%
Strategic Management	1.3%	3.5%	3.4%	2.4%
Supply Chain/Transport/Logistics	17.6%	5.6%	13.7%	2.7%
Taxation	1.0%	0.4%	8.0%	0.5%
Other Discipline	17.0%	8.2%	18.6%	4.5%

Source: AACSB BSQ Programs Module (2020–21)

STUDENTS

Programs

PERCENTAGE OF BUSINESS SCHOOLS OFFERING AT LEAST ONE PROGRAM, BY DELIVERY VEHICLE AND LEVEL

Program Level	N Institutions	Full-Time	Part-Time	Face-to-Face	One-Year
Undergraduate	765	95.3%	63.1%	81.2%	1.8%
Master's Generalist (EMBA)	300	32.0%	73.0%	64.0%	4.7%
Master's Generalist (MBA)	702	78.8%	84.9%	69.5%	23.2%
Master's Generalist (MBA/ Dual Degree)	85	82.4%	62.4%	69.4%	8.2%
Master's Generalist (Non-MBA)	150	90.7%	52.7%	76.7%	28.0%
Master's Specialist	655	87.9%	80.2%	75.6%	37.7%
Doctoral	403	89.6%	49.9%	75.9%	0.0%

PERCENTAGE OF BUSINESS SCHOOLS OFFERING AT LEAST ONE PROGRAM BY DELIVERY VEHICLE AND LEVEL (Continued)

Program Level	Evenings and Weekends	Exclusively Online	Primarily Online	Multi-Modal	Blended	Distance Education
Undergraduate	19.1%	15.3%	15.6%	26.3%	21.3%	1.4%
Master's Generalist (EMBA)	61.0%	4.7%	5.7%	9.0%	31.0%	0.3%
Master's Generalist (MBA)	55.1%	23.2%	24.1%	25.5%	26.5%	1.3%
Master's Generalist (MBA/Dual Degree)	37.6%	9.4%	8.2%	31.8%	10.6%	1.2%
Master's Generalist (Non-MBA)	19.3%	12.0%	8.0%	12.7%	23.3%	0.0%
Master's Specialist	40.9%	22.0%	23.4%	22.1%	27.3%	1.8%
Doctoral	10.7%	3.7%	5.2%	11.9%	20.6%	0.7%

Source: AACSB BSQ Programs Module (2020–21)

STUDENTS

Programs

PROGRAMS STARTED AND ENDED IN 2021

Program Level	N Institutions	Programs Started	Programs Ended
Undergraduate	31	35	26
Master's Generalist (EMBA)	1	1	–
Master's Generalist (MBA)	7	3	5
Master's Generalist (MBA/Dual Degree)	2	–	2
Master's Generalist (Non-MBA)	4	2	2
Master's Specialist	33	35	21
Doctoral	6	4	2

Source: AACSB BSQ Programs Module (2020-21)

PROGRAMS STARTED IN 2021, BY PROGRAM CHARACTERISTICS AND LEVEL

Program Level	Full-Time	Part-Time	Evening & Weekends	Online	One-Year
Undergraduate	30	12	1	4	–
Master's Generalist (EMBA)	–	1	–	1	–
Master's Generalist (MBA)	2	1	1	1	–
Master's Generalist (MBA/ Dual Degree)	2	–	–	–	2
Master's Generalist (Non-MBA)	23	20	5	3	9
Master's Specialist	2	2	1	–	–
Doctoral	27	17	–	5	–

Source: AACSB BSQ Programs Module (2020-21)

STUDENTS

Demographics

PERCENTAGE OF ENROLLMENT STATUS, BY EDUCATION LEVEL

Degree Level	N Institutions	Full-Time	Part-Time
Undergraduate	822	88.2%	11.8%
Master's Generalist	750	47.4%	52.6%
Master's Specialist	650	72.6%	27.4%
Doctoral	400	77.3%	22.7%

Source: AACSB BSQ Programs Module (2020–21)

Gender

ENROLLMENT BY GENDER

Program Level	N Institutions	Female	Male
Undergraduate	720	44.4%	55.6%
Master's Generalist (EMBA)	298	33.6%	66.4%
Master's Generalist (MBA)	699	43.2%	56.8%
Master's Generalist (MBA/Dual Degree)	85	42.0%	58.0%
Master's Generalist (Non-MBA)	147	50.1%	49.9%
Master's Specialist	650	50.8%	49.2%
Doctoral	400	43.5%	56.5%

Source: AACSB BSQ Programs Module (2020–21)

DEGREES CONFERRED, BY GENDER

Program Level	N Institutions	Female	Male
Undergraduate	822	45.7%	54.3%
Master's Generalist (EMBA)	298	32.6%	67.4%
Master's Generalist (MBA)	699	41.5%	58.5%
Master's Generalist (MBA/Dual Degree)	85	40.8%	59.2%
Master's Generalist (Non-MBA)	147	48.9%	51.1%
Master's Specialist	650	52.6%	47.4%
Doctoral	400	40.2%	59.8%

Source: AACSB BSQ Programs Module (2020–21)

STUDENTS

Enrollment by Ethnicity (U.S. Only)

UNDERGRADUATE

Ethnicity	N Institutions	Percentage
American Indian or Alaskan Native	440	0.4%
Asian	463	9.3%
Black or African American, Non-Hispanic	466	8.6%
Hispanic/Latino	466	16.0%
Native Hawaiian or Other Pacific Islander	415	0.2%
White, Non-Hispanic	467	57.8%
Two or More Races	448	3.8%
Race/Ethnicity Unknown	467	3.9%

Source: AACSB BSQ Programs Module (2020–21)

MASTER'S GENERALIST

Ethnicity	N Institutions	Percentage
American Indian or Alaskan Native	441	0.4%
Asian	441	9.5%
Black or African American, Non-Hispanic	441	9.9%
Hispanic/Latino	441	10.1%
Native Hawaiian or Other Pacific Islander	441	0.3%
White, Non-Hispanic	441	56.7%
Two or More Races	441	2.6%
Race/Ethnicity Unknown	441	10.6%

Source: AACSB BSQ Programs Module (2020–21)

STUDENTS

Enrollment by Ethnicity (U.S. Only)

MASTER'S SPECIALIST

Ethnicity	N Institutions	Percentage of Total Enrollment
American Indian or Alaskan Native	368	0.3%
Asian	368	12.4%
Black or African American, Non-Hispanic	368	9.6%
Hispanic/Latino	368	12.7%
Native Hawaiian or Other Pacific Islander	368	0.2%
White, Non-Hispanic	368	54.3%
Two or More Races	368	2.8%
Race/Ethnicity Unknown	368	7.6%

Source: AACSB BSQ Programs Module (2020–21)

DOCTORAL

Ethnicity	N Institutions	Percentage of Total Enrollment
American Indian or Alaskan Native	142	0.2%
Asian	142	14.3%
Black or African American, Non-Hispanic	142	11.3%
Hispanic/Latino	142	6.8%
Native Hawaiian or Other Pacific Islander	142	0.4%
White, Non-Hispanic	142	54.4%
Two or More Races	142	2.5%
Race/Ethnicity Unknown	142	10.2%

Source: AACSB BSQ Programs Module (2020–21)

STUDENTS

Enrollment

ENROLLMENT BY EDUCATION LEVEL

Program Level	N Institutions	Mean	Std. Dev.	Median	Total Enrollment
Undergraduate	765	2,139	2,073	1,522	1,636,176
Master's Generalist (EMBA)	298	252	449	118	75,170
Master's Generalist (MBA)	699	639	862	354	446,684
Master's Generalist (MBA/Dual Degree)	85	40	52	20	3,377
Master's Generalist (Non-MBA)	147	923	1,794	238	135,657
Master's Specialist	650	818	1,447	315	531,856
Doctoral	400	166	202	110	66,499

Source: AACSB BSQ Programs Module (2020–21)

STUDENTS

Enrollment

MASTER'S GENERALIST ENROLLMENT BY PROGRAM TYPE

Program Type	N Institutions	Mean	Std. Dev.	Median	Total Enrollment
Executive MBA	271	129	218	60	34,908
International MBA	22	120	196	49	2,629
Master of Business Administration (MBA)	666	310	413	175	206,279
Master of International Business Studies	3	818	1,132	295	2,455
Master of Management (Generalist)	39	640	1,062	202	24,948
MBA in International Management	2	190	6	190	381
MBA/Doctor of Pharmacy	11	12	17	5	129
MBA/Health Administration	5	41	48	16	206
MBA/Juris Doctor	55	6	6	4	331
MBA/Master of Engineering	7	5	4	6	34
MBA/MS in Nursing	6	1	2	0	6
MS in Management	32	135	204	70	4,322
Professional MBA	35	257	293	123	9,006
Other	225	357	892	69	80,304

Source: AACSB BSQ Programs Module (2020–21)

STUDENTS

Enrollment

MASTER'S SPECIALIST ENROLLMENT, BY PROGRAM TYPE

Program Type	N Institutions	Mean	Std. Dev.	Median	Total Enrollment
MA in Economics	22	24	31	14	539
Master of Accountancy (or Accounting)	184	65	68	44	11,957
Master of Arts (MA)	32	173	449	56	5,522
Master of Health Administration	15	96	199	46	1,443
Master of International Business	22	112	236	44	2,467
Master of International Management	3	39	34	56	116
Master of Management (Specialist)	20	178	244	117	3,568
Master of Management Science	6	419	507	279	2,516
Master of Manufacturing Management	2	18	25	18	36
Master of Philosophy	12	16	30	4	198
Master of Professional Accountancy (or Accounting)	42	95	116	55	3,977
Master of Public Administration	4	74	43	85	298
Master of Science (MS)	198	294	499	82	58,207
Master of Transportation and Logistics Management	3	36	46	21	109
MS in Accountancy (or Accounting)	102	66	79	44	6,745
MS in Business Administration	17	143	176	63	2,429
MS in Computer Information Systems	6	65	75	40	391
MS in Economics	26	57	61	32	1,491
MS in Finance	117	83	97	50	9,735
MS in Information Systems	28	92	96	54	2,576
MS in Information Technology	11	110	154	34	1,212
MS in Information Technology Management	7	39	39	23	271
MS in Management Information Systems	18	65	47	48	1,168
MS in Management Science	6	292	411	110	1,754
MS in Marketing	37	59	56	37	2,189
MS in Taxation	30	43	47	28	1,292
Other	397	428	852	153	169,867

Source: AACSB BSQ Programs Module (2020–21)

STUDENTS

Degrees Conferred

DEGREES CONFERRED, BY PROGRAM LEVEL

Program Level	N Institutions	Mean	Std. Dev.	Median	Total Degrees Conferred
Undergraduate	765	532	492	371	406,944
Master's Generalist (EMBA)	298	58	84	31	17,391
Master's Generalist (MBA)	699	127	153	75	88,740
Master's Generalist (MBA/Dual Degree)	85	11	15	6	921
Master's Generalist (Non-MBA)	147	188	306	63	27,623
Master's Specialist	650	221	355	87	143,839
Doctoral	400	13	14	9	5,303

Source: AACSB BSQ Programs Module (2020–21)

STUDENTS

Tuition (in USD)

UNDERGRADUATE

Student Provenance	N Institutions	Mean	Std. Dev.	Median
Within Province/State/EU	766	15,185.29	15,239.71	10,006.00
Out of Province/State	766	21,238.98	15,708.44	19,028.00
Out of Country/Territory/EU	765	23,479.61	14,788.26	21,494.00
Online	254	13,081.61	11,237.56	10,066.50

FULL-TIME MBA

Student Provenance	N Institutions	Mean	Std. Dev.	Median
Within Province/State/EU	575	36,928.31	29,474.15	28,560.00
Out of Province/State	575	43,829.87	30,726.79	37,559.00
Out of Country/Territory/EU	574	45,629.01	30,077.96	38,677.18
Online	211	34,351.06	27,102.61	28,125.00

PART-TIME MBA

Student Provenance	N Institutions	Mean	Std. Dev.	Median
Within Province/State/EU	603	35,734.60	25,558.14	28,298.95
Out of Province/State	603	42,331.01	26,011.91	37,641.67
Out of Country/Territory/EU	599	43,574.35	25,941.71	38,476.00
Online	316	32,369.91	20,263.70	28,248.25

Source: AACSB BSQ Programs Module and BSQ Finances Module (2020–21)

PLEASE NOTE:

Undergraduate figures are for a single year, and the MBA figures are for the full program.

STUDENTS

Employment Status

UNDERGRADUATE

Graduate Employment Status	Full-Time Percentage	Part-Time Percentage	Total Percentage
Seeking Employment	45.2%	35.0%	44.2%
Not Seeking Employment, Company Sponsored/ Already Employed	4.7%	6.0%	4.6%
Not Seeking Employment, Continuing Education	9.0%	3.9%	8.3%
Not Seeking Employment, Postponing Job Search	0.7%	0.6%	0.7%
Not Seeking Employment, Starting Own Business	0.6%	0.6%	0.5%
Not Seeking Employment, Other Reasons	1.5%	2.1%	1.4%
No Employment Information Available	38.3%	51.8%	40.3%

MASTER'S GENERALIST (MBA)

Graduate Employment Status	Full-Time Percentage	Part-Time Percentage	Total Percentage
Seeking Employment	58.3%	13.5%	38.8%
Not Seeking Employment, Company Sponsored/ Already Employed	6.5%	33.9%	18.1%
Not Seeking Employment, Continuing Education	1.8%	0.7%	1.3%
Not Seeking Employment, Postponing Job Search	1.2%	0.2%	0.8%
Not Seeking Employment, Starting Own Business	2.2%	0.8%	1.5%
Not Seeking Employment, Other Reasons	1.5%	0.6%	1.1%
No Employment Information Available	28.5%	50.3%	38.4%

Source: AACSB BSQ Employment Module (2020–21)

STUDENTS

Employment Status

MASTER'S GENERALIST (EMBA)

Graduate Employment Status	Full-Time Percentage	Part-Time Percentage	Total Percentage
Seeking Employment	0.6%	4.8%	3.3%
Not Seeking Employment, Company Sponsored/ Already Employed	22.5%	40.4%	33.1%
Not Seeking Employment, Continuing Education	0.0%	0.0%	0.0%
Not Seeking Employment, Postponing Job Search	0.0%	0.0%	0.0%
Not Seeking Employment, Starting Own Business	0.2%	1.2%	0.8%
Not Seeking Employment, Other Reasons	0.9%	0.1%	0.4%
No Employment Information Available	75.9%	53.4%	62.4%

MASTER'S GENERALIST

Graduate Employment Status	Full-Time Percentage	Part-Time Percentage	Total Percentage
Seeking Employment	52.7%	13.0%	34.7%
Not Seeking Employment, Company Sponsored/ Already Employed	7.1%	36.1%	19.9%
Not Seeking Employment, Continuing Education	1.6%	0.5%	1.1%
Not Seeking Employment, Postponing Job Search	1.1%	0.2%	0.7%
Not Seeking Employment, Starting Own Business	2.0%	0.9%	1.5%
Not Seeking Employment, Other Reasons	1.4%	0.5%	1.0%
No Employment Information Available	34.0%	48.8%	41.1%

Source: AACSB BSQ Employment Module (2020–21)

Employment Status

MASTER'S SPECIALIST

Graduate Employment Status	Full-Time Percentage	Part-Time Percentage	Total Percentage
Seeking Employment	55.0%	28.4%	47.8%
Not Seeking Employment, Company Sponsored/ Already Employed	4.9%	22.2%	9.6%
Not Seeking Employment, Continuing Education	2.2%	1.2%	1.9%
Not Seeking Employment, Postponing Job Search	1.0%	0.7%	1.0%
Not Seeking Employment, Starting Own Business	1.2%	2.1%	1.4%
Not Seeking Employment, Other Reasons	3.4%	1.2%	2.7%
No Employment Information Available	32.3%	44.2%	35.7%

DOCTORAL

Graduate Employment Status	Full-Time Percentage	Part-Time Percentage	Total Percentage
Seeking Employment	72.1%	26.8%	63.5%
Not Seeking Employment, Company Sponsored/ Already Employed	13.4%	38.0%	20.7%
Not Seeking Employment, Continuing Education	0.2%	1.4%	0.3%
Not Seeking Employment, Postponing Job Search	0.5%	1.4%	0.5%
Not Seeking Employment, Starting Own Business	0.6%	0.0%	0.5%
Not Seeking Employment, Other Reasons	0.6%	4.2%	0.8%
No Employment Information Available	12.6%	28.2%	13.8%

Source: AACSB BSQ Employment Module (2020–21)

STUDENTS

Job Acceptance for Those Seeking Employment

DOCTORAL

Employment Status	Full-Time Percentage	Part-Time Percentage	Total Percentage
Accepting Employment by Graduation	91.7%	89.5%	91.7%
Accepting Employment After Graduation, and by 3 Months	4.5%	5.3%	4.5%
Accepting Employment Between 3 and 6 Months After Graduation	1.1%	5.3%	1.2%
No Acceptance Reported	2.7%	0.0%	2.6%

MASTER'S GENERALIST (ALL)

Employment Status	Full-Time Percentage	Part-Time Percentage	Total Percentage
Accepting Employment by Graduation	69.4%	50.8%	65.6%
Accepting Employment After Graduation, and by 3 Months	12.9%	10.2%	13.0%
Accepting Employment Between 3 and 6 Months After Graduation	3.8%	15.8%	5.9%
No Acceptance Reported	13.8%	23.2%	15.5%

MASTER'S GENERALIST (MBA)

Employment Status	Full-Time Percentage	Part-Time Percentage	Total Percentage
Accepting Employment by Graduation	69.2%	53.0%	66.1%
Accepting Employment After Graduation, and by 3 Months	13.6%	9.9%	13.5%
Accepting Employment Between 3 and 6 Months After Graduation	4.1%	13.4%	5.6%
No Acceptance Reported	13.1%	23.7%	14.8%

Source: AACSB BSQ Employment Module (2020–21)

STUDENTS

Job Acceptance of Those Seeking Employment

MASTER'S GENERALIST (EMBA)

Employment Status	Full-Time Percentage	Part-Time Percentage	Total Percentage
Accepting Employment by Graduation	23.1%	39.8%	40.1%
Accepting Employment After Graduation, and by 3 Months	7.7%	13.9%	13.2%
Accepting Employment Between 3 and 6 Months After Graduation	7.7%	19.3%	19.8%
No Acceptance Reported	61.5%	27.1%	26.9%

MASTER'S SPECIALIST

Employment Status	Full-Time Percentage	Part-Time Percentage	Total Percentage
Accepting Employment by Graduation	54.1%	52.5%	53.9%
Accepting Employment After Graduation, and by 3 Months	16.6%	11.9%	15.9%
Accepting Employment Between 3 and 6 Months After Graduation	14.1%	14.9%	14.2%
No Acceptance Reported	15.2%	20.8%	16.0%

UNDERGRADUATE

Employment Status	Full-Time Percentage	Part-Time Percentage	Total Percentage
Accepting Employment by Graduation	47.2%	22.1%	43.9%
Accepting Employment After Graduation, and by 3 Months	17.4%	15.5%	18.1%
Accepting Employment Between 3 and 6 Months After Graduation	16.0%	14.3%	16.2%
No Acceptance Reported	19.4%	48.1%	21.8%

Source: AACSB BSQ Employment Module (2020–21)

STUDENTS

Averages of Base Salary Statistics in USD⁵

DOCTORAL

Model	N Institution	Total Graduates	Mean	Median	Low	High
Full-Time	36	228	406,987.8	171,227.3	389,867.3	370,675.2
Part-Time	4	17	732,789.8	675,666.7	729,048.3	2,695,333.3
Total	40	248	442,181.1	165,100.1	425,572.2	570,898.8

MASTER'S GENERALIST

Model	N Institution	Total Graduates	Mean	Median	Low	High
Full-Time	126	8,022	78,055.7	40,867.7	76,352.8	133,357.7
Part-Time	49	911	90,739.9	45,970.7	83,473.8	151,470.3
Total	167	9,216	79,547.5	40,634.5	77,146.5	139,218.6

MASTER'S GENERALIST (MBA)

Model	N Institution	Total Graduates	Mean	Median	Low	High
Full-Time	4	5	106,517.7	109,851.4	108,479.6	117,207.1
Part-Time	7	72	105,602.1	94,709.5	105,388.2	151,096.4
Total	13	95	102,663.8	92,888.2	101,568.6	137,348.8

MASTER'S GENERALIST (EMBA)

Model	N Institution	Total Graduates	Mean	Median	Low	High
Full-Time	4	5	106,517.7	109,851.4	108,479.6	117,207.1
Part-Time	7	72	105,602.1	94,709.5	105,388.2	151,096.4
Total	13	95	102,663.8	92,888.2	101,568.6	137,348.8

Source: AACSB BSQ Employment Module (2020–21)

⁵ The figures in the Mean and Median columns are weighted averages of the reported figures, and the figures in the Low and High columns are basic averages of the reported figures. All figures are shown in USD.

STUDENTS

Averages of Base Salary Statistics*

MASTER'S SPECIALIST

Model	N Institution	Total Graduates	Mean	Median	Low	High
Full-Time	99	7,921	61,083.9	33,112.5	59,085.4	104,839.4
Part-Time	45	1,580	60,112.3	39,109.5	58,965.8	109,996.4
Total	145	10,188	60,885.0	34,435.5	58,915.5	107,457.1

UNDERGRADUATE

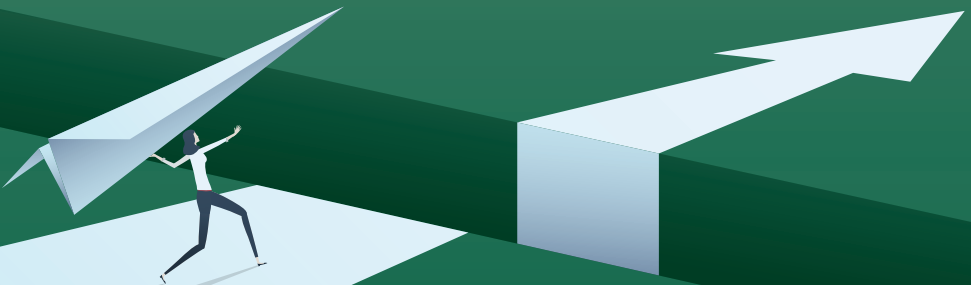
Model	N Institution	Total Graduates	Mean	Median	Low	High
Full-Time	154	22,151	54,761.5	23,969.5	54,574.4	98,787.7
Part-Time	30	1,823	50,737.1	32,646.2	49,446.3	89,732.3
Total	213	28,315	53,979.6	24,097.9	53,626.1	101,892.6

Source: AACSB BSQ Employment Module (2020–21)

* The figures in the Mean and Median columns are weighted averages of the reported figures, and the figures in the Low and High columns are basic averages of the reported figures. All figures are shown in USD.

WHAT MAKES A LEADER ENTREPRENEURIAL?

They are comfortable in ambiguity,
navigate uncertainty, and manage risks.
**They are the problem solvers
our world needs now.**



In times of uncertainty, values-driven entrepreneurial leadership is essential. Discover Babson College's new **Arthur M. Blank School for Entrepreneurial Leadership**.

babson.edu/eleadership

BABSON COLLEGE

ABOUT AACSB

ABOUT AACSB INTERNATIONAL

In business education, as in business itself, the pace of change and its growing complexity mean that no single institution can go it alone.

We unite the best minds in business education, and the best minds in business, to work as one to achieve our common goal: creating the next generation of great leaders.

We believe in the power of collective strength and connected wisdom. Whether your institution is seeking to build collaborative relationships through our Business Education Alliance or planning to pursue accreditation, AACSB membership will connect you to the people, resources, and ideas you need to thrive.

Businesses committed to delivering the highest-quality corporate training—and to recruiting top-quality students—join AACSB to connect with the best schools and best practices, and to stay on top of the latest trends.

AACSB RESOURCES

AACSB DataDirect

Gain access to specific, customizable business school data vital to everyday decision-making through the most comprehensive business school database in the world. Participation in DataDirect surveys provides you with high-quality data and reports about the characteristics, practices, trends, and environments of business programs worldwide—information you won't find anywhere else. For more information visit aacsb.edu/datadirect.

Data Reports

AACSB offers several data reports pertaining to a variety of business school topics. These data reports are available for purchase from AACSB's online store. Individuals associated with participating members schools may request free access to these reports in DataDirect. Complimentary executive summaries are publicly available for download at aacsb.edu/publications/datareports.

Research Reports

AACSB's Business Education Intelligence group has published numerous research reports related to issues and opportunities for business, business education and society. Recent reports and briefs have focused on lifelong learning as well as technologies with the potential to transform business and business education, such as artificial intelligence and blockchain. These reports are available for public access at aacsb.edu/publications/researchreports.

The AACSB Exchange

Enhance your networking and learning experience through the AACSB Exchange—the largest online network of business schools, exclusive to AACSB members. Featuring member-generated content, the AACSB Exchange is your networking tool to connect with peers and experts in the business education industry around the world. Activate your account today at theexchange.aacsb.edu.

AACSB Insights

AACSB Insights publishes perspectives from leading voices in global business education, the latest business school data and trends, and views on the current and future state of business. Discover the latest news, and ideas in business education worldwide by signing up for AACSB's weekly email newsletter. Sign up at aacsb.edu/link.

Changing Lives Through Education

The Darla Moore School of Business offers **top-notch business education** that prepares students to be **data proficient, analytically capable and functionally grounded**, so as graduates they can land competitive positions with premier companies worldwide.

The undergraduate international business and international MBA programs are ranked **No. 1 by U.S. News & World Report**. The undergraduate program has been **No. 1 for more than 20 years**, while the international MBA has ranked in the **top three for more than 30 years**.

South Carolina's professional MBA is ranked **No. 1 in South Carolina and No. 25 for part-time MBA programs** in the country by *U.S. News & World Report*. The Moore School also has the **No. 5 undergraduate and No. 22 graduate operations and supply chain programs in North America**, has the **fourth-largest risk management and insurance school in the U.S.** and is a **top 20 Global Center of Insurance Excellence**.

Moore School graduates join an international network of more than **55,000 alumni** working in all 50 states and more than 95 countries on six continents.



UNDERGRADUATE MAJORS

- Accounting
- Economics
- Finance
- International business Management
- Operations and supply chain
- Marketing
- Real estate
- Risk management and insurance

UNDERGRADUATE MINORS AND CONCENTRATIONS

- Business administration minor
- Economics minor
- Risk management and insurance minor
- Business analytics undergraduate concentration

GRADUATE PROGRAMS

- MBA
- International MBA
- Professional MBA
- Master of Accountancy
- Master of Arts in Economics
- Master of Human Resources
- Master of International Business
- Master of Science in Business Analytics
- Ph.D. in Business Administration
- Ph.D. in Economics

GRADUATE CERTIFICATES

- Business Analytics
- Cybersecurity Management
- Enterprise Resource Planning Systems
- Global Strategy
- International Finance
- Strategic Innovation



**Darla Moore
School of Business**

sc.edu/moore

REAL-WORLD FOCUS. PROVEN RESULTS.

The University of Hartford's Barney School of Business is AACSB accredited and has been ranked by *Bloomberg Businessweek* and *The Princeton Review* among the top business schools in the country.

PREPARING INNOVATIVE LEADERS FOR ENGAGEMENT, IMPACT, AND SERVICE

We provide an innovative career-ready undergraduate curriculum, as well as master's programs in both online and on-site formats for busy working professionals.

UNIVERSITY OF HARTFORD
BARNEY SCHOOL OF BUSINESS



UNDERGRADUATE PROGRAMS

- Accounting
- Business Administration
- Business Analytics and Managerial Economics
- Entrepreneurial Studies
- Finance
- Management
- Marketing
- Risk Management and Insurance
- 3+1 Accelerated Undergraduate and Graduate Program

DUAL DEGREE PROGRAMS

- Dual MBA/Master of Architecture
- Dual MBA/Master of Engineering
- Dual MBA/MS in Accounting and Taxation
- Dual MBA/MS in Business Analytics
- Dual MBA/MS in Organizational Psychology

GRADUATE PROGRAMS

- Master of Business Administration, M.B.A.
- Master of Science in Accounting and Taxation, M.S.A.T.
- Master of Science in Business Analytics, M.S.B.A.
- Master of Science in Management, M.S.M.

CENTERS & INSTITUTES

- Risk and Disruptive Technology Institute
- R.C. Knox/People's United Insurance Center for Insurance Studies
- Entrepreneurial Center and Women's Business Center
- Upper Albany Main Street (Micro Business Incubator Consulting)

HARTFORD.EDU/BARNEY
West Hartford, Connecticut



[aacsb.edu](https://www.aacsb.edu)

Americas

777 South Harbour Island Blvd.
Suite 750
Tampa, Florida 33602-5730 USA
+1 813 769 6500

Europe, Middle East, and Africa

UP Building , Piet Heinkade 55
1019 GM Amsterdam, The Netherlands
+31 20 509 1070

Asia Pacific

331 North Bridge Road
#10-04/05 Odeon Towers
Singapore, 188720
+65 6592 5210